



Inside this issue:

PRESIDENT'S MESSAGE	1
BOARD MEMBERS	2
NEW MEMBERS	3
CLE EVENTS	4
MCPA CELEBRATES WITH 15TH ANNIVERSARY CRYSTAL GALA	5-6
STUDENT AFFAIRS & MENTORING STUDENTS WE NEED YOUR	7-8
ATTENTION MEMBERS	9
NOTABLE WEBSITES	11
MCPA VOLUNTEER OPPORTUNITIES	12
OFFICERS, BOARD MEM- BERS & COMMITTEE CHAIRS CONTACT INFORMATION	13

MCPA Editing Team:

Newsletter Committee Chair:

Rachel Fineberg
Rfineberg@goldblumhess.com

Contributing Editor:

Suzanne Sarver, RP
SSarver@cubsmart.com

Layout Editor:

Michelle Calkins, PA. C.P.
Mcalkins@millerturetsky.com

PRESIDENT'S MESSAGE by Tracey L. Barnes, RP, Pa. C.P.

Wow, what a night! If you missed the Crystal Gala on January 15th, you missed the event of the year. The Gala event was attended by over 80 attendees including members and their guests as well as dignitaries including Common Pleas Judges Kelly C. Wall, Garrett D. Page, Steven C. Tolliver and Cheryl L. Austin, District Attorney Risa Vetri Ferman, and First Deputy Sheriff Willie Richet. Attorney Melissa Murphy Weber gave a wonderful presentation to the group which included some interesting and entertaining definitions of skills you need to be a paralegal. What a wonderful evening to celebrate 15 years of the Montgomery County Paralegal Association. Thank you to all who attended and to all that made the evening so wonderful.

Let's not stop there! Let's keep the MCPA growing. Last year I challenged all to make 2014 a break out year; challenging members to become more involved with YOUR Association. Since that challenge I have met a few of you who have accepted my challenge and have become more involved, giving input where needed, joining committees, and even becoming members of the Board of Directors. At the January 2015 Board of Directors meeting we had a member (not a Director on the Board) join us because she wanted to learn more about how the organization runs and how she can help. As one of the more seasoned members of the MCPA, this was amazing. (By the way all are welcome to join us at Board of Directors meetings. We meet on the first Thursday of the month. Check with me if you would like to come.). Thank you to all who have accepted the 2014 challenge! To those who are waiting for the right time—make 2015 that time. Make 2015 that year where you make a difference in our Association and the legal community. Take time to check out the many opportunities that the MCPA has to offer for you to become involved. Want to contribute outside of our Association in a more charitable way? Check out the Montgomery County Bar Foundation. Consider making the Foundation part of your charitable giving this year so it can continue to assist the many wonderful organizations in Montgomery County.

The difference in our successful organization is the wonderful paralegals we have in our Association. We have over 60 paralegals who have taken the steps to be certified in one way or another, whether on the state level by becoming a PA.C.P. or on the national level by becoming RP's or CRP's. MCPA paralegals are proud of our profession and want to see this profession grow and prosper. Harry Reichner, MA, recently sent me an article from the U.S. News and World Report listing the profession of Paralegal as the 91st of the best jobs in America and quotes the Bureau of Labor Statistics of having a growth rate of 16.7 percent (leaps and bounds above the growth rate of attorneys).

Let's continue to work to enhance the Montgomery County Paralegal Association and continue its growth and strength so it can continue to be an integral part of the growth of the paralegal profession. The strength of the Montgomery County Paralegal Association starts with **YOU**.

OFFICERS

TRACEY L. BARNES, RP, PA. C.P.	PRESIDENT
SHERRY BARAG, CRP, PA.C.P.	VICE PRESIDENT
KELLY SMITH	TREASURER
ROBERTA FEDORKA, PA. C.P.	SECRETARY

BOARD OF DIRECTORS

TRACEY L. BARNES, RP, PA. C.P.
SHERRY BARAG, CRP, PA.C.P.
KELLY SMITH
ROBERTA FEDORKA, PA. C.P.
CHRISTOPHER GREGG
NOREEN MESSMER, PA.C.P.
SUZANNE SARVER, RP
MICHELLE CALKINS, PA.C.P.
JENNIFER KUEMMERLE, PA.C.P.

STUDENT LIAISONS

LANSDALE SCHOOL OF BUSINESS:	MAGGIE PUGH STACEY LAULETTA
MANOR COLLEGE:	NACOLE SHAW CLEOPATRA JOE RAMONA PONCE
PEIRCE COLLEGE:	DARREN MERRITT

WELCOME NEW MEMBERS!

***Lori Fife, Student
Manor College***

***Jessica Wells, Associate Member
Graduate of Villanova University***

***Yvette Williams, Student
Lansdale School of Business***

REMEMBER TO SUPPORT THOSE WHO SUPPORT MCPA!

*All of the sponsors appearing in the
MCPA Today provide financial
support to keep MCPA programs
affordable to its members.*

**REMEMBER OUR SPONSORS
THE NEXT TIME YOU NEED A
SERVICE!**



Records and Reporting

Providing Quality Support
Services to the Legal
Community for Over 30 Years.

Records Retrieval

- Authorization Requests
- Subpoena Requests
- Process Service
- Online Repository
- On-Site Copying

Court Reporting

- Realtime Reporting
- Video Depositions
- Video Conferencing
- Video Text Synchronization
- Trial Presentation & Playback

www.theMCSgroup.com

Philadelphia, New York, Chicago, Los Angeles, Baltimore, Miami, Wilmington

Tel 877.246.3665 ext. 8143 E-Mail Kevin.Melfi@theMCSgroup.com

NEXT CLE MEETING:

MONTGOMERY COUNTY DISCOVERY MASTER PROGRAM by Wendy Rothstein, Esquire



THURSDAY, FEBRUARY 19, 2015 at 6:00 pm

Please RSVP by February 16th to jkuemmerle@lutherwoods.org

Fox Rothschild LLP
10 Sentry Parkway, Suite 200
Blue Bell, PA 19422-3001
(610) 397-6500

*Light Bites and Beverages provided by MCPA
Free for Members / \$20.00 for Non-Members*

Collection: Manna on Main Street; While we appreciate all donations, the following goods are especially needed right now: Canned Soups (all kinds), Spaghetti Sauce and Canned Tomatoes, Pasta, Diapers (all sizes), Fresh produce: Vegetables and Fruits (apples, potatoes, and other produce that stores well)

****Approved for 1.5 (Substantive) CLE by NFPA and Keystone Alliance****

UPCOMING GENERAL MEETING:

Saturday, March 7, 2015

Zotos Diner

10:00 a.m.

*The speaker is Tim Seiders from
One Stop Financial Services.
He will be speaking about Social Security.*

****Approved for CLE credit by NFPA
and Keystone Alliance****

ABELSON

Results Driven... Talent Acquisition Specialists

We have worked closely with law firms and companies of all sizes since our founding in 1990; providing paralegal talent to clients throughout the Philadelphia region. We can meet your hiring needs on a permanent or contract basis in every legal specialty.

Whether you are a job seeker or employer, using our team will get you the results you need.
Call us today.



Cathy Abelson

Joyce Feinstein

(215) 561-3010 • www.AbelsonLegalSearch.com

MCPA CELEBRATES WITH 15TH ANNIVERSARY CRYSTAL GALA

by
Annette M. Long, CRP, Pa.C.P.



Months of planning and organizing culminated in an evening of celebration! On January 15, 2015, Montgomery County Paralegal Association members, sponsors and supporters gathered at the William Penn Inn to celebrate the association's 15 Year Anniversary.



The 86 guests in attendance included MCPA members along with spouses or guests and MCPA sponsors including representatives from Kelly & Partners, TASA, Morgan Wentworth, Digital Justice and Love Court Reporting. Faculty representatives and students from the Lansdale School of Business and Manor College attended the event in acknowledgement and celebration of each school's paralegal certification program. Of note, Lisa Vessels, 2015 President of

the National Federation of Paralegal Associations and Judy Stouffer, past President and current board advisor to the Philadelphia Association of Paralegals were also in attendance.

Other special guests included four Court of Common Pleas Judges, including the Honorable Kelly C. Wall, the Honorable Garrett D. Page, the Honorable Cheryl Austin and the Honorable Steven C. Tolliver. Also in attendance was Montgomery Bar Foundation President Steven Lupin (along with wife, Linda), District Attorney Risa Vetri Ferman, Chief Deputy Sheriff Willie Richet and Magisterial District Justice candidate Edward Levin, Esquire.

As MCPA could not continue to grow without the support of the legal community at large, two individuals were recognized for their support throughout the years. George Whitehair of the Lansdale School of Business, who has promoted MCPA to his students and has been a consistent source of information and knowledge and George Cardenas of the Montgomery Bar Association for his tireless work with the MCPA listserv and assistance with publications. Both of these individuals have been instrumental to MCPA's continued success!

CONTINUED ON NEXT PAGE

USA-Serve

SM "Expediting The Process of Service"
888-778-8721

- Serve Process To Any Address In The U.S.A.
- Easily Request & Track Service Online 24/7
- Automated Email Service Status Updates
- Electronic Copies of Signed Affidavits Online
- Online Skip Trace Reports

Click HERE To Register FREE Online Today!

Local (Up To 250 Miles) - \$55
Remaining Continental USA - \$70

MCPA CELEBRATES WITH 15TH ANNIVERSARY CRYSTAL GALA CONTINUED

The speaker for the evening was the vibrant and charismatic Melissa Murphy Weber, Esquire. A current member of the law firm of Elliot Greenleaf, Ms. Weber served as a member of the Pa House of Representatives and as an assistant District Attorney in Montgomery County. The audience laughed out loud as Ms. Weber described an attorney approaching a paralegal: "Hey, I have a favor to ask you..." Meanwhile, the paralegal is thinking "Oh no! Here he comes again, thinking it's something that won't take me all day, but it will. I should have just run while I had a chance to get away!" Ms. Weber's words of encouragement and understanding of a paralegal's role in the law firm were delivered with humor, honesty and with respect and appreciation for the paralegal profession.



Rounding out the evening, retiring board members – Sheila Keyes-Hayden and Harry Reichner were acknowledged for their contribution and years of service to MCPA. The ceremony installing the 2015 Officers and Board of Directors was performed by the Honorable Steven C. Tolliver. We were reminded that an association functions best when combining the elements of leadership and teamwork. The election to the Board of Directors is both a privilege and an honor. The 2015 MCPA Officers include: Tracey L. Barnes, President, Sherry Barag, Vice President, Roberta Fedorka, Secretary, Kelly Smith, Treasurer and Board of Directors Noreen Messmer, Christopher Gregg, Michelle Calkins, Jennifer Kuemmerle and Suzanne Sarver.

A special thanks to our members, guests, sponsors and supporters for having made this such a spectacular event.

We anxiously look forward to the bright future of MCPA and the paralegal profession!



PHILADELPHIA BAR ASSOCIATION

The only official provider of discounted court reporting services exclusively for Philadelphia Bar Association members.

THE LEGAL INTELLIGENCER'S
BEST of 2013
VOTERS' CHOICE
(2011 • 2012 • 2013)

THE POWER OF LOVE

WHY CHOOSE LOVE COURT REPORTING?

- #1 in Customer Service Satisfaction
- Voted "Best of 2011, 2012 & 2013"
- Service, Technology, Support
- Personalized, Professional Service
- Three Quality checks of Transcript
- Receive Transcript on time
- Reporter arrives on time
- Nationwide Coverage
- Experienced, Certified & Registered Reporters
- 24/7 Accessibility
- One call takes care of ALL your court reporting services

Member of the National Court Reporters Association
Member of the Pennsylvania Court Reporters Association

SERVING PENNSYLVANIA, NEW JERSEY & DELAWARE WITH NATIONWIDE COVERAGE

LOVE

COURT REPORTING, INC.

1500 Market Street, 12th Floor, East Tower, Philadelphia, PA 19102, (215) 568-5599
2002 Sprout Road, Suite 100, Broomall, PA 19008, (610) 355-1948
TOLL FREE: 888-462-6200 • Fax: (610) 355-1540 • Email: loveus@lovecourtreporting.com
www.lovecourtreporting.com

STUDENT AFFAIRS & MENTORING

STUDENT AFFAIRS & MENTORING

By: Lisa M. LaPenna, Pa.C.P.

2015 STUDENT LIAISONS

We are pleased to announce that our student liaisons have been elected for 2015 and they are as follows:

Lansdale School of Business:

Maggie Pugh
Stacey Lauletta

Manor College:

Nacole Shaw
Cleopatra Joe
Ramona Ponce

Peirce College:

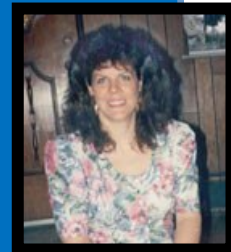
Darren Merritt

STUDENT AFFAIRS & MENTORING**STUDENT AFFAIRS & MENTORING
CONTINUED****STUDENT MENTORING COMMITTEE
NEEDS YOUR HELP**

A Manor College student is looking for an internship in Western Montgomery County (King of Prussia area towards Reading) on Tuesday and Thursday afternoons. Please consider asking your Human Resource Dept. if such a position would be available and contact Lisa LaPenna at (610) 941-2523 or llapenna@kaplaw.com.

**JOAN WELDON
MEMORIAL SCHOLARSHIP**

Are you a paralegal studies student in the Delaware Valley area? Could you use \$1,000 to help with your educational expenses? If so, then you need to enter to win the 2015 Joan Weldon Memorial Scholarship!



The Joan Weldon Memorial Scholarship is a \$1,000 award from The Philadelphia Association of Paralegals, given to a paralegal student demonstrating academic excellence. The winner is selected by members of the Professional Development Committee and is presented at the Association's quarterly luncheon in July.

This year's application period is from 2/2/2015 through 6/5/2015. All entries must be postmarked by 6/5/2015. Certain other rules and restrictions apply. See the Scholarship Application for more details.

ATTENTION MEMBERS!

All MCPA members are welcome to attend board meetings. Board meetings are held the first Thursday of every month. For further details please contact any officer.



We'll Help You Put the Pieces Together

*Whether you're looking for a new position
or searching for the "right" candidate,
we work hard to facilitate the perfect match.*

Call Karen Ash today to find out how easy it is for you!
karenash@morganwentworth.com

PROFESSIONAL
LEGAL
RECRUITING

**Morgan
Wentworth LLC**
WHEN THE BEST IS WORTH IT

800 Penllyn Pike
Blue Bell, PA 19422
Tel: 610-783-0900 X 23
Fax: 610-783-7940
www.morganwentworth.com

We Value Our Partnership with ALA and Salute Its Service to Its Members

We Didn't Invent The Business We Just Developed A Better Way To Get Things Done



Realtime Streaming

WWW.KLWREPORTERS.COM
877-KLW-DEPO

KLW Kaplan Leaman & Wolfe
COURT REPORTING & LITIGATION SUPPORT

NOTABLE WEBSITES:

American Bar Association:

www.americanbar.org/groups/paralegals

The Bar Association is a great resource for paralegals for understanding the ABA's continuing mission in supporting the standards of education for paralegals and by promoting attorneys' professional, effective and ethical utilization of paralegals.

Montgomery Bar Association:

www.montgomerybar.org

The Montgomery Bar Association is a resource for Montgomery County Paralegals that are registered with the site and are also an MCPA member. The website has an entire marketplace for CLE classes, seminars, publications and opinions that affect our state and county. The website is a great resource for job searching as well in the Montgomery County area.

Montgomery Paralegal Association:

www.montcoparalegals.org

The Montgomery County Paralegal Association has a website that can give you the latest details on events and happenings with Montgomery County Paralegals. It is a site to connect to other paralegals and get involved in committees or other volunteer events.

National Federation Paralegal Association:

www.paralegals.org

The NFPA website is an invaluable resource for all paralegals. The NFPA is devoted to establishing standards for all paralegals and providing resources for paralegals to continue and enhance their skills in the field. The site has CLE information, a job bank, professional development as well as exam information to become a certified or registered paralegal.

VALUABLE LEGAL RESEARCH SITES:

Supreme Court of the United States:

www.supremecourt.gov

The official page of the United States Supreme Court featuring court opinions, orders, calendars, schedules, rules, news releases and general information. A great resource concerning issues affecting our constitution.

US Government Printing Office:

www.gpo.gov

The US government printing office provides free public access to full-text federal documents, such as the Code of Federal Regulations, the US Code, and Congressional Reports. This site has the latest information with news, legislation as well as the history of our great nation.

MCPA VOLUNTEER OPPORTUNITIES

Below are the names and contact information for the Chairpersons of the various MCPA committees. If you have an idea or would like to volunteer, please contact a Chairperson! The Fundraising and Public Relations Committees are newly formed and are actively seeking new committee members.

MEMBERSHIP

Coordinate membership drives and membership matters

Tracey L. Barnes, RP, Pa. C.P.
TBarnes@dischellbartle.com

NEWSLETTER

Solicit and write articles; layout and editing for the bi-monthly newsletter, MCPA Today

Rachel Fineberg, Pa. C.P.
rfineberg@goldblumhess.com

JOB BANK

Solicit, accumulate, and distribute current job postings to the general membership

Kelly Smith
ksmith@kanepugh.com

MARKETING

Solicits sponsors and advertisers for MCPA

Deborah A. Long, Pa. C.P.
deblong420@gmail.com
Deborah A. Arbuckle, Pa. C.P.
darbuckle@kaplaw.com

PUBLIC RELATIONS

Promote the MCPA in the legal and general Community

Annette M. Long, CRP, Pa.C.P.
amlong83@gmail.com

HOSPITALITY & EVENTS PLANNING

Plan and schedule upcoming MCPA presentations, meetings and social events

Kathleen M. Zamorski, Pa. C.P.
kathy.zamorski@gmail.com

COMMUNITY OUTREACH & PRO BONO

Plan and schedule MCPA charitable and community events

Roberta Fedorka, Pa. C.P.
rfedorka@obrlaw.com

FUNDRAISING

Organize and hold fundraisers for the Association and/or charitable organizations

Noreen Messmer, PA. C.P. and
nmessmer@fordbuckman.com
Sherry Barag, CRP, PA. C.P.
sbarag@foxrothschild.com

STUDENT AFFAIRS & MENTORING

Provide a range of services and support to students interested in a paralegal career

Lisa LaPenna, Pa. C.P.
llapenna@kaplaw.com

CONTACT INFORMATION

OFFICERS		BOARD MEMBERS	
PRESIDENT: TRACEY L. BARNES, RP, PA. C.P. TBARNES@DISCHELLBARTLE.COM 215-362-2474 X 208		NOREEN MESSMER, PA. C.P. NMESSMER@FORDBUCKMAN.COM	
	VICE PRESIDENT: SHERRY BARAG, CRP, PA. C.P. SBARAG@FOXROTHSCHILD.COM 610-397-4431	SHERRY BARAG, CRP, PA. C.P. SBARAG@FOXROTHSCHILD.COM	
		CHRISTOPHER GREGG CGREGG@KANEPUGH.COM	
TREASURER: KELLY SMITH KSMITH@KANEPUGH.COM 484-824-5668		SUZANNE HOFFMAN SARVER, RP SSARVER@CUBESMART.COM	
		MICHELLE CALKINS, PA. C.P. MCALKINS@MILLERTURETSKY.COM	
SECRETARY: ROBERTA FEDORKA, PA. C.P. RFEDORKA@OBRILAW.COM 610-834-6213		JENNIFER KUEMMERLE, PA. C.P. JKUEMMERLE@LUTHERWOODS.ORG	
STUDENT LIAISONS			
LANSDALE SCHOOL	MAGGIE PUGH	MANOR COLLEGE:	PEIRCE COLLEGE: WESLEY GARVIN
OF BUSINESS:	STACEY LAULETTA	CLEOPATRA JOE	
	HOPE LATTANZE	RAMONA PONCE	
MARKETING & PUBLIC RELATIONS: <i>MARKETING CO-CHAIRS:</i> DEBBIE LONG, PA. C.P. DEBLONG420@GMAIL.COM DEBBIE ARBUCKLE, PA. C.P. DARBUCKLE@KAPLAW.COM <i>PUBLIC RELATIONS CHAIR:</i> ANNETTE M. LONG, CRP, PA.C.P. AMLONG83@GMAIL.COM		NEWSLETTER: <i>COMMITTEE CHAIR:</i> RACHEL FINEBERG RFINEBERG@GOLDBLUMHESS.COM <i>CONTRIBUTING EDITOR:</i> SUZANNE SARVER, RP SSARVER@CUBESMART.COM <i>LAYOUT EDITOR:</i> MICHELLE CALKINS, PA. C.P. MCALKINS@MILLERTURETSKY.COM	
STUDENT AFFAIRS & MENTORING: LISA LAPENNA, PA. C.P. LLAPENNA@KAPLAW.COM		HOSPITALITY & EVENTS PLANNING: KATHLEEN M. ZAMORSKI, PA. C.P. KATHY.ZAMORSKI@GMAIL.COM ANNETTE M. LONG, CRP, PA.C.P. AMLONG83@GMAIL.COM	
COMMUNITY OUTREACH & PRO BONO: RO FEDORKA, PA. C.P. RFEDORKA@OBRILAW.COM		FUNDRAISING: NOREEN MESSMER, PA. C.P. NMESSMER@FORDBUCKMAN.COM SHERRY BARAG, CRP, PA. C.P. SBARAG@FOXROTHSCHILD.COM	
SOCIAL MEDIA: CHRISTOPHER GREGG CGREGG@KANEPUGH.COM		MEMBERSHIP: TRACEY BARNES, RP, PA. C.P. TBARNES@DISCHELLBARTLE.COM	
2015 REPRESENTATIVES AND COORDINATORS			
NFPA PRIMARY DELEGATE: DEBBIE ARBUCKLE, PA. C.P. DARBUCKLE@KAPLAW.COM NFPA SECONDARY DELEGATE: SHERRY BARAG, CRP, PA. C.P. SBARAG@FOXROTHSCHILD.COM		KEYSTONE ALLIANCE PRIMARY DELEGATE: SUZANNE H. SARVER, RP SSARVER@CUBESMART.COM KEYSTONE ALLIANCE SECONDARY DELEGATE: ANNETTE LONG CRP, PA.C.P. AMLONG83@GMAIL.COM	
CERTIFICATION AMBASSADOR (PACE & PCC): SHERRY BARAG, CRP, PA. C.P. SBARAG@FOXROTHSCHILD.COM		BAR LIAISON: ANNETTE M. LONG, CRP, PA.C.P. AMLONG83@GMAIL.COM	
JOB BANK COORDINATOR: KELLY SMITH KSMITH@KANEPUGH.COM		CLE COORDINATOR: TRACEY BARNES, RP, PA. C.P TBARNES@DISCHELLBARTLE.COM	
WEBMASTER: HARRY A. REICHNER		HREICHNER@COZEN.COM	